



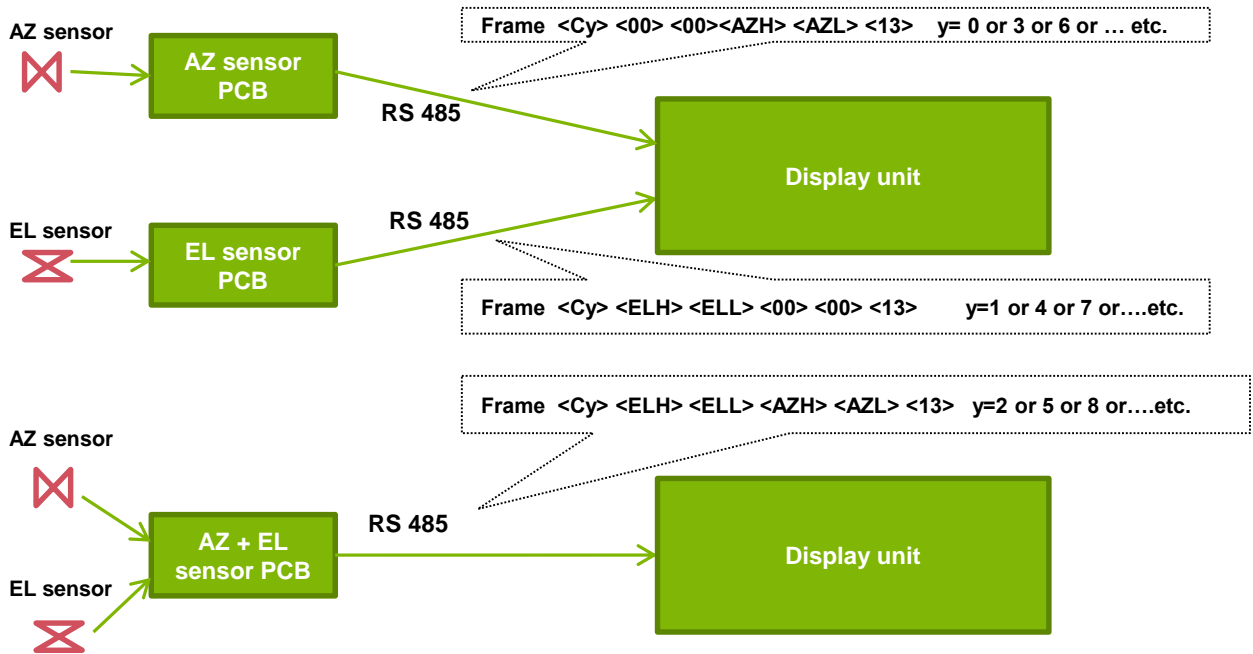
AZ & EL

Meten en displayen

Principle



General frame layout `<Cy> <ELH><ELL><AZH><AZL><13>` RS485 → 9600,N,8,1

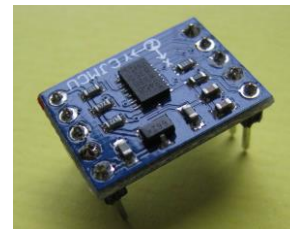
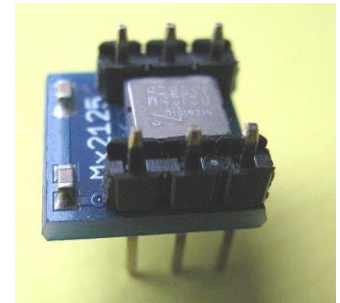


De opnemers

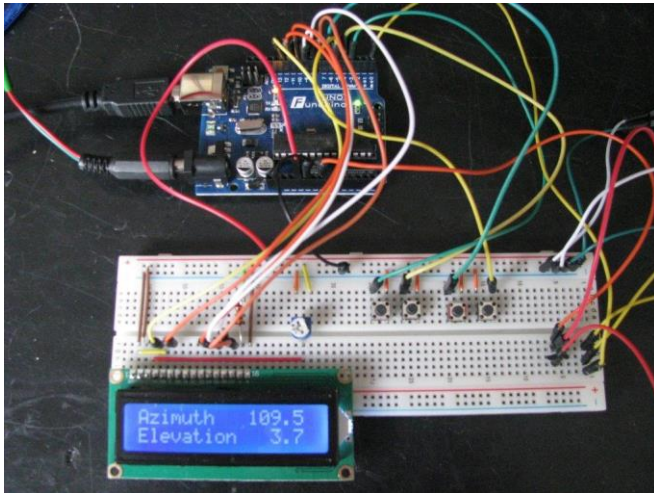
Voor azimuth:
12 bits absolute encoders Hall effect



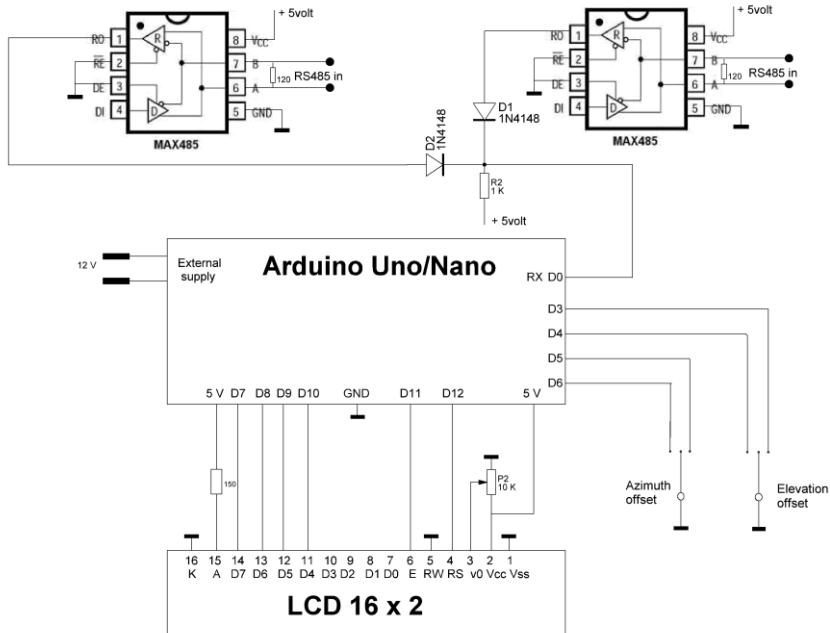
Voor elevatie:
hoekopnemers



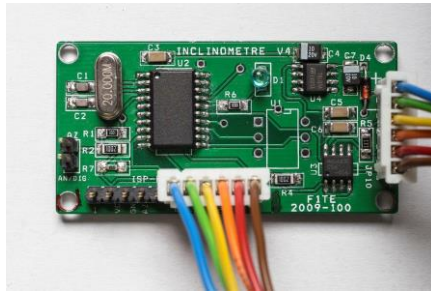
Display unit



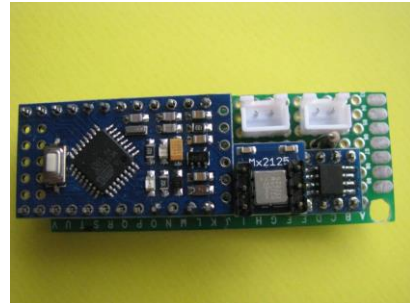
Schema display unit



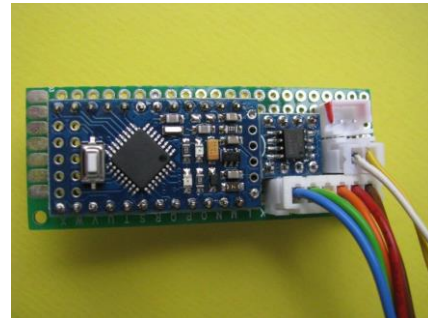
Sensor print



Met PIC controller



Met Arduino



Opnemers in de praktijk

